

VIY5-125

Ground Penetrating Radar

The VIY®5-125 is reliable GPR in robust case. Low-frequency system designed for deep exploration. With VIY5-125 you can detect:

- metal utilities, including pipes and cables
- non-metallic pipes, including PVC and asbestos cement ones
- concrete sewer systems
- buried tanks and barrels
- subsurface objects (water table, bed-rock, voids, cracks, heterogeneous inclusions);

User friendly and low cost system for diverse application. VIY®5-125 is suitable for both simple detection of underground utilities and complex geophysical investigations.



VI45-125 GPR



Wide Operation Possibilities

- Simplified interface for basic applications
- Wide range of abilities in standard interface



Any External GPS Receiver

- GPS receiver connects directly to GPR antenna
- GPS can operate as trigger device



Sealed Lead Acid Battery

- Easy replacement
- Worldwide available battery
- Standard form factor battery



GPR Antenna

- Shield antenna systems
- Build in replaceable battery
- Original "Telbin" technology
- Built-in tilt sensors
- Robust fiberglass body
- Exchangeable bottom protector made of HDPE
- Low power consumption
- More than 8 hours of continuous operation



Any Windows Computer

- Any Windows-based computer is applicable
- The antenna directly connects to PC



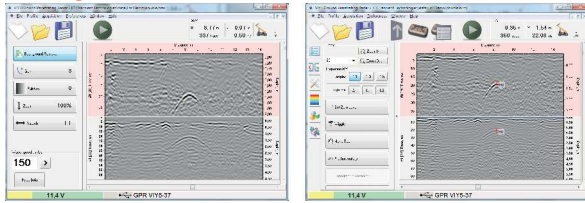
Connections

- USB connections
- Easy to use push-pull connectors
- Endurance sealed connectors
- Simple setup of WiFi
- Standard extender can be used

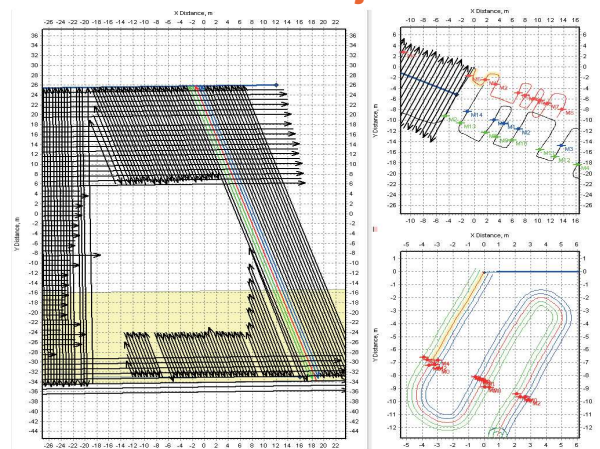


VIY5-125 GPR

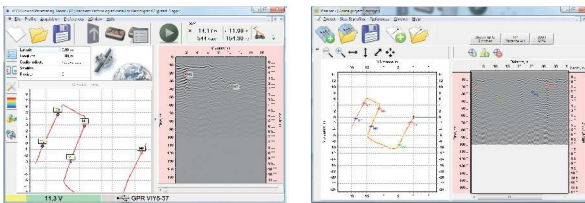
Simplified or Advanced Interface



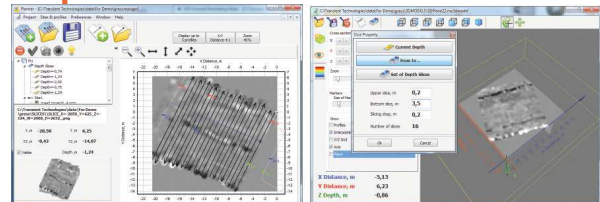
Arbitrary Positions of GPR Profiles in Project



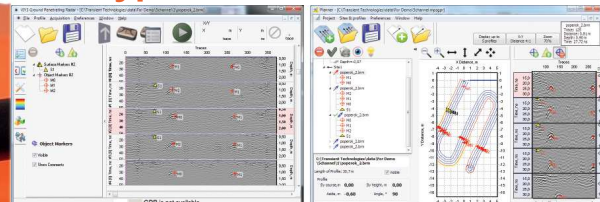
Visualization of GPS Track



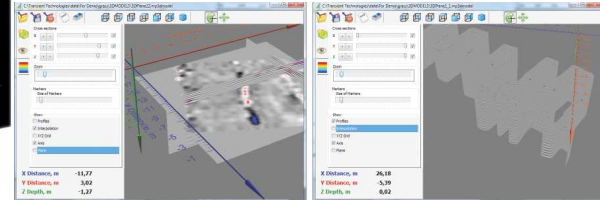
Depth Slices



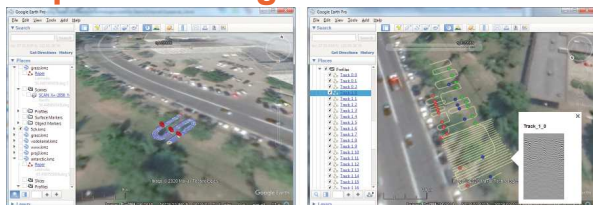
Two Types of Markers



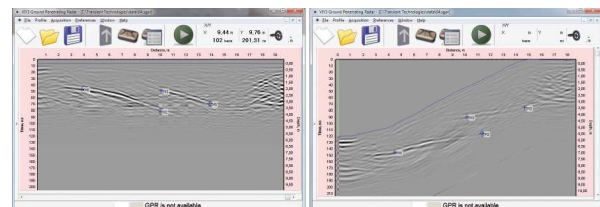
3D Visualization



Export to Google Earth



Automatic Topographic Correction





VIY®5-125 Specifications

Antenna frequency	125 MHz
Survey window	120, 180, 240, 300 ns
Depth of sounding up to (determined by soil properties)	15 m
Spatial resolution (better than)	0.9 m
Trigger mode	single, internal, external
Dimensions of antenna, L x W x H	1010 x 530 x 237 mm
Weight of antenna	22 kg
Operating temperature range	-20°C to +40°C
Operation time	not less 8 then hours